

MINI-MAKEOVER SPECIAL

01: LIVING, BEDROOM & STAIRS



GRAND DESIGN

TRADITION MEETS CONTEMPORARY STYLE WITHIN THE WALLS OF THIS BEAUTIFUL SYDNEY HOME

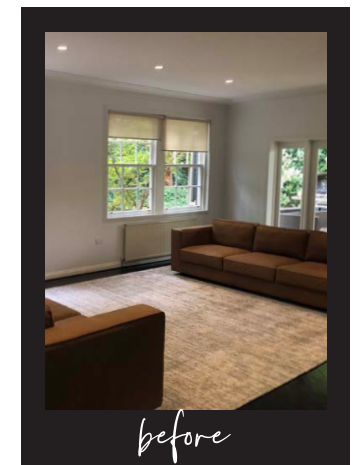
Words SUE WHEELER Photography JACKIE TURK

When Siobhan and her family first moved into their 1930s home in Sydney's eastern suburbs, it was obviously in need of some TLC. The Hamptons-style interior didn't reflect the history of the property and Siobhan wanted to capture a traditional feel in a contemporary way and for it to be "fresher and brighter". With plans to undertake a more extensive renovation sometime in the future, the family enlisted interior designer Sarah Yarrow, of Sarah Yarrow Interiors, to help them with stage one of the facelift, which included redesigning and decorating a formal living area, the main bedroom and the home's grand entrance, along with its spectacular sweeping staircase. "My job was to create a balance between family functionality and elegance," explains Sarah, whose contemporary take honoured the home's heritage and added warmth and depth to the interiors. The vast lounge looked empty, even with Siobhan's two sofas and a rug, so Sarah used wainscoting, wallpaper, rich, warm colours and select pieces of furniture to create a friendly, inviting room with a cool 'bar nook'. "It was a big space for a formal lounge," she explains, "so I made it feel cosier than the footprint suggested." In doing so, the room now feels spacious yet intimate.

LAYERED UP Adding texture, depth and character to classic interior styles, wainscoting can be straightforward to install, and Intrim, which supplied the wainscoting for Siobhan's home, makes DIY kits designed to stick to the wall – no power tools required! The dramatic secret to cosiness in this space? A dark paint colour up top. Here, designer Sarah used Dulux Glide Time to get the effect. Blinds and curtains also added warmth and polish to the room, with Sarah swapping existing roller blinds for elegant custom Roman blinds from A'besco. She also used sheer curtains to enclose the space and soften the wall of glass. >

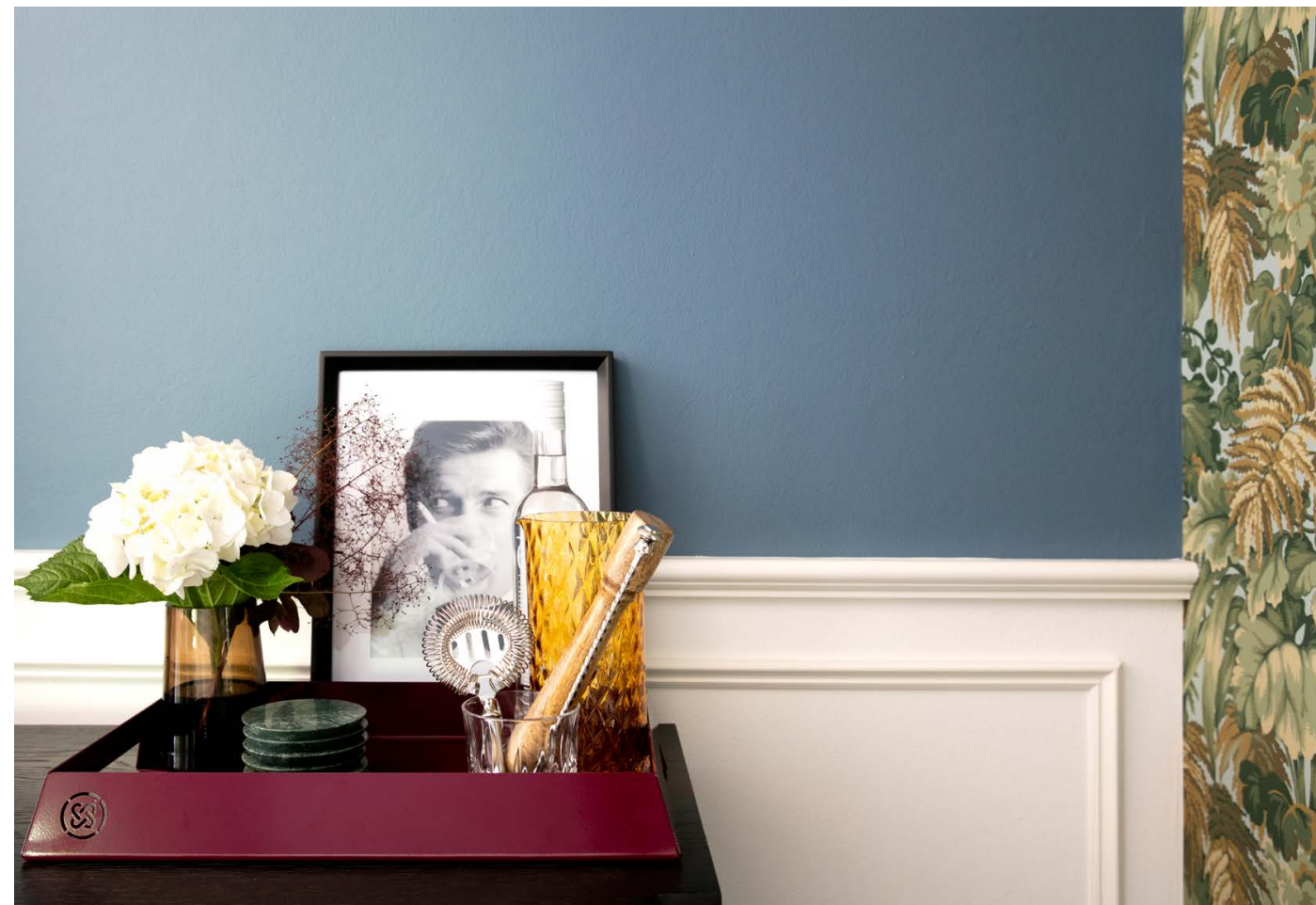
MAKEOVER BUDGET: \$40,000*

* PLEASE NOTE: ALL PRICES ARE APPROXIMATE AND ARE BASED ON OWNER ESTIMATES. INCLUDES LOUNGE ROOM AND NOOK AND DESIGN.



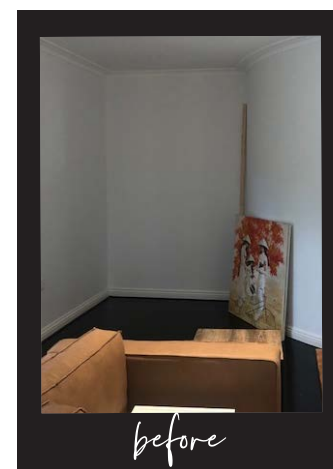
before

GROUP OUTING Sarah completely transformed this unusual nook from a “what do we do?” space into a gorgeous nook. A splash of perfectly sized wallpaper was the key here, with an equally lush artwork and chic pieces creating a fresh visual display: “Use different heights, scales and materials to make it polished and interesting,” explains designer Sarah, who replicated colours to tie them back to the lounge. The colours in the beautiful artwork by Ozlem Savelle echo the hues in the wallpaper, and the mulberry-coloured tray from Jordan matches one of the cushions on Siobhan’s sofa. The moody buffet from Globe West is reflected in the mirror from Life Interiors, as is the brass Atollo lamp by Eurodice.



“USE A TRAY TO *connect smaller objects*, RATHER THAN PLACING THEM SPORADICALLY ON A SURFACE”

~ SARAH YARROW, INTERIOR DESIGNER



PATTERN PLAY Find a weekend-sized wall and turn a bland space into a special moment with opulent wallpaper, as pictured here (top, right & above) in this ‘surprise’ bar nook, featuring Cole & Son’s ‘Royal Fernery’ wallpaper. Pasting the wall instead of the paper will make for a faster, easier application (with the appropriate paper and surface), as do peel-and-stick removable wallpaper options. >



AND RELAX... While bold may be beautiful, a quiet wallpaper – such as this on-trend grass ‘Bali Weave’ in Silver from Annandale Wallpapers – is perfect for updating your bedroom and evoking a natural and relaxed vibe. Homeowner Siobhan says she appreciates how it adds texture without cluttering the space.

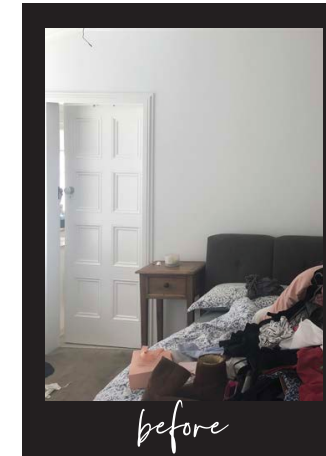
MAKEOVER BUDGET: \$28,000*



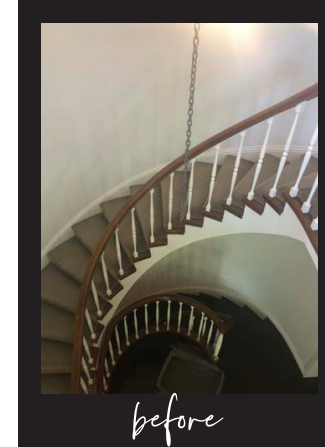
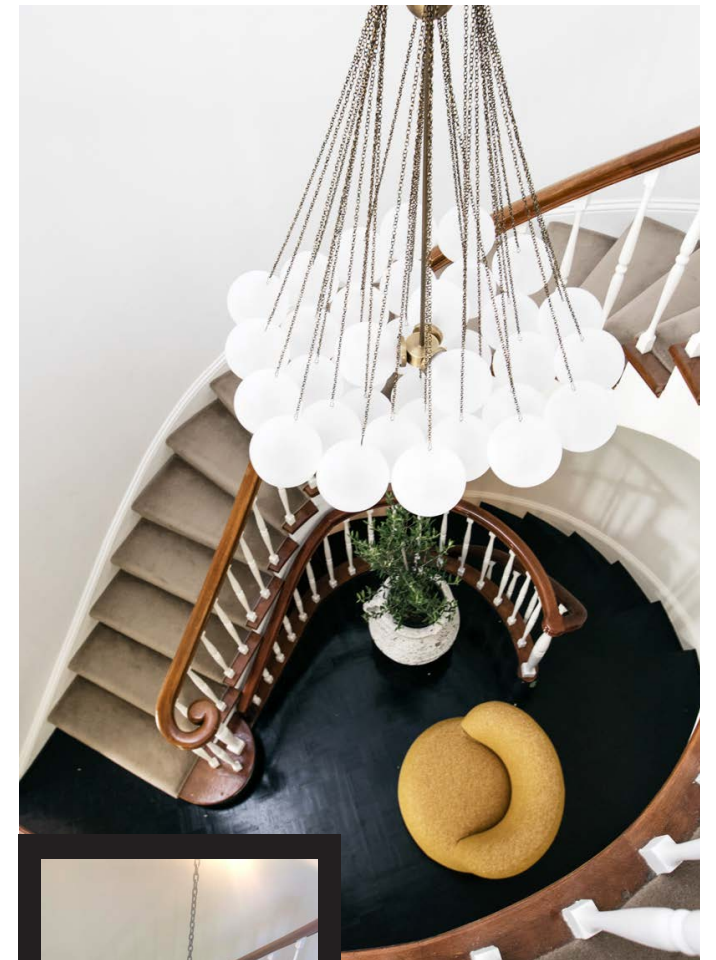
“WALL LIGHTS free up space ON BEDSIDE TABLES, WHICH ALWAYS SEEM TO GET CLUTTERED WITH YOUNG CHILDREN AROUND”

~SIOBHAN, HOMEOWNER

SWITCH IT UP Wall-mounted lights in the bedroom look cleaner and more elegant than a lamp on a bedside table, and will visually “elevate your eye and prevent everything from being on one low level,” says Sarah. Find similar black and brass sconces at Light Co. For a speedy makeover (that doesn’t require an electrician) Ikea has a great selection of wall-mounted lights that plug into a power point. The lovely bedside tables by Coopers Store were custom-made to fit the space.



* PLEASE NOTE: ALL PRICES ARE APPROXIMATE AND ARE BASED ON OWNER AND DESIGNER ESTIMATES. INCLUDES BEDROOM AND STAIRWELL



MAKE AN ENTRANCE Instant wow factor was created here with the installation of a showstopping pendant. More like a work of art, the ‘Cloud 37’ chandelier from Criteria Collection can be admired all the way up the stairs, however a beautiful light in a smaller space will still create impact. The surrounds are kept simple with the Jordan ‘Joy’ chair and a green-filled planter.

MINI-MAKEOVER CHEAT SHEET

TIME FRAME

Seven months for the whole project

TOP TIP

“Velvet is perfect for both contemporary and classic styles – it’s a great blend,” says interior designer Sarah.

SOURCE BOOK

Sarah Yarrow Interiors, 0449 903 165, sarahyarrowinteriors.com.
Living Walls Joinery, 0403 718 685, livingwallsjoinery.com.au.
Coopers Store, (02) 9540 1922, coopersstore.com.au.